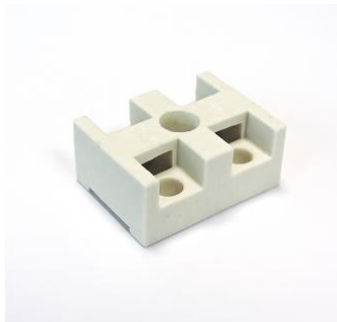


TECHNICAL DATASHEET CERAMIC TERMINAL BLOCKS M24BIPS



Terminal blocks two ways (pins) in technical ceramics. Impressive properties and resistance to high temperature of ceramic enable to apply this type of terminal blocks in electrical devices for both industry as well as domestic users. In industry are used in extremely high temperature applications such as furnaces, heaters, process equipment and machinery. These special terminal blocks type M24BIPS allows the use of all cable termination ends, good visualization of the insertion of conductors (as ring and fork terminals).

TECHNICAL DETAILS

Housing material:	Technical Ceramic C110
Temperature of use:	-20°C ÷ 500°C
Housing temperature:	Until 1000°C
Thermal shock resistance:	Good
Chemical resistance:	Excellent
Electric strength of ceramic:	Minimum 10 kV/mm
Color:	White

CERTIFICATION and CONFORMITY

Comply with:	CEI EN 60998-1:2004 , EN 60998-2-1:2004
Comply with:	2011/65/EU (restriction of the use of certain hazardous substances - RoHS)

APPLICATIONS

- ▶ electrical wiring industrial and domestic

FEATURE

- ▶ very high temperature resistance
- ▶ use of all cable termination ends

LAST REVISION 05-09-2018

The informations contained in this data sheet replace all preceding data sheets and are based on the current knowledge at the date of publication. Are given in good faith, without warranty, express or implied, the user must verify the suitability and completeness of such information according to the specific use. The original language of this data sheet is italian, the translation is made in good faith and to the best knowledge. The photos the logos and the marks TecnicalCeramic and TecnicalCeramic.store are exclusive property of SAVAR Srl. Reproduction and spread, also partial, of them are forbidden without written authorization from SAVAR Srl